



MaxPac8100CP3



Displays Closed

Rear



Feet detach and secure on the back of the unit to reduce transit case size.



Three 24" LCDs, computer, keyboard, mouse and cables fit into a single Pelican iM2950 roller transit case.

### COMPACT AND RUGGED

The **MaxPac<sup>®</sup>8100CP** marries a Skylake Xeon D processor up to 512GB of ECC DDR4 memory, up to 6 SSDs, an nVidia Quadro graphics board, four 10GbE, four GbE network connections and maximum of three folding 24.1" LCDs each having 1920 x 1200 resolution. You can specify three, two or a single display by the last digit of the model.

The displays fold flat against the computer chassis with all cables attached. The entire workstation, keyboard, mouse, and power cables fit into an Pelican iM2950 case. While in the transit case, it is rated for 48" drops and all environments specified in MIL STD 810G such as rain, dust, sand and extreme temperatures.

### CHOICE OF 16, 12, 8 or 4 CORE XEON PROCESSORS AND GRAPHICS CARD.

The **MaxPac8100CP** is powered by four choices of Skylake Xeon D motherboard and processor with up to 512GB of ECC DDR4 memory. For the graphics power user, the addition of the nVidia Quadro P4000 or P2200 or the RTX4000.

### STORAGE

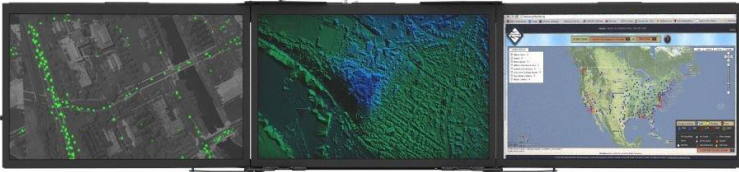
**Four removable SATA SSDs** in sizes from 480GB to 7.68TB (7mm) may be used for each drive making possible cost effective SSD data storage of up to 30.72TB of data storage. **Additionally, two removable NVMe SSDs** with sizes from 480GB to 7.68TB can also be included for system use or additional data in either JBOD or RAID 1.

### STANDARD I/O

The motherboard provides two 10GbE FSP+, two 10GbE RJ45, 4 GbE RJ45, two USB 2.0, two USB 3.0 and an IPMI RJ45 connection.

### PCIe EXPANSION

In addition to the PCIe slot provided for the Quadro graphics, an additional full height 9.5" PCIe3.0 x16 is available for customer use.



MaxPac8100CP3 Triple



MaxPac8100CP2 Dual



MaxPac8100CP1 Single

Specification	MaxPac8100CP
Display	24.1" 1920 x 1200 300 nits, configured as single (CP1) or folding dual (CP2) or triple (CP3) screens, optional integrated HDMI projector ports
Motherboard	Supermicro X11SDV-16C-TP8F for 16C32T, other options available for 12C/24T, 8C/16T and 4C/8T
Processor	Skylake Xeon D 3.0GHz MaxTurbo, 2.3GHz base.
Memory	Total Slots: 4 DIMMs up to 512GB Max, DDR4 ECC.
Graphics	nVidia Quadro P2200, P4000 or RTX4000
USB	2 USB 3.0 Bottom, 2 USB 2.0 Top
SSD	Four SATA SSDs from 480GB to 7.68TB each for a total of 30.72TB in a single removable top load magazine.  Two NVMe SSDs from 960GB to 7.68TB removable from bottom.
Network	Two 10GbE SFP+, two 10GbE RJ45, four GbE RJ45
Security	TPM2.0 + Secure Boot
Audio	ALC 888S HD Audio rear access jacks
Environmental	0-50C operating, -40C to 70C storage washable K&N Filters
Weight including case	50-75 lbs depending on options.
Keyboard/Mouse	Detached USB, packs in transit case
Transit case	Pelican 2950 with custom foam