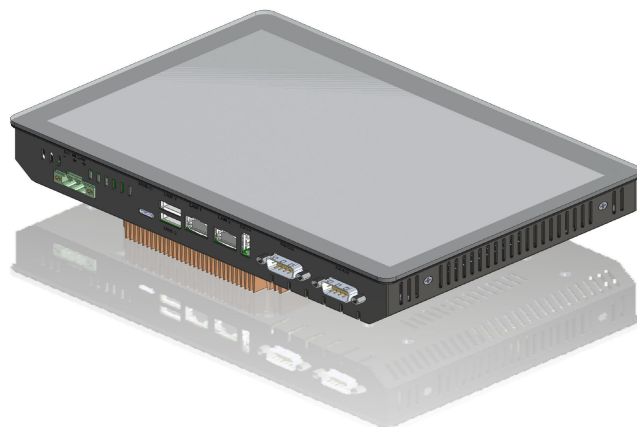


10.1" Panel Computer



SUMMARY

| | | | |
|---------------------|---------------------|--|------------------------------|
| ID | 30047 | CPU OPTION: | NORTH INVENT PART NO: |
| COMPANY NAME | North Invent Norway | Intel Atom x6413E @ 1.5 GHz (3.0 GHz) | WE101 000 581 |
| VAT | 987884002VAT | | |
| ADDRESS | Sørhauggata 128 | | |
| | 5527 Haugesund | | |
| | NORWAY | <p>NB! To order optional PSU versions and / or I/Os listed on the next page, please ask your North Invent representative for the correct P/N.</p> | |

REVISION HISTORY

| APPROVED | CHECKED | DRAWN | STATUS | DESCRIPTION |
|-------------------|-------------------|-------------------|----------------------------|---|
| 2023.09.01 OKJ | 2023.09.01 OKJ | 2023.09.01 OKJ | Issued for Customer Review | First Revision, illustrations to be updated |

10.1" Panel Computer

The North Invent 10.1" Panel Computer is a state-of-the-art computer concept, built with industrial extended temperature components.

Designed for 10 years of manufacturing, the North Invent 10.1" Panel Computer is boasting powerful 11th Generation Intel® Atom™ Processors.

It has 10 point PCAP multitouch integrated into a slim design.

As for all North Invent products the will unit remains fanless with low power consumption.



TECHNICAL SPECIFICATION 10.1" Panel Computer

MATCHING STANDARDS (Pending)

IEC 60945, IACS E10, EMC Directive-2014/30/EU, RoHS, REACH
Compliant to a selection of MIL standards

| | |
|---------------------------------|--|
| DISPLAY SIZE | 10.1" - Active area 216.96 (W) X 135.60 (H) mm |
| OVERALL DIMENSIONS | 242 (W) x 164 (H) x 58 (42) (D) mm |
| NET / GROSS WEIGHT | 1.7 / 2.5 kg |
| RESOLUTION | Max 1280 x 800 pixels |
| RESPONSE TIME | 13 ms (typ) |
| CONTRAST RATIO | 800:1 (typ) |
| CPU | Intel® Atom x6413E @ 1.5 GHz (3.0 GHz) |
| LIGHT INTENSITY | 700 cd/m2 (typ) |
| GRAPHICS | Intel® UHD Graphics (Gen11) |
| VIEWING ANGLE | ±88° |
| SSD | 32GB eMMC 5.1 onboard flash |
| SUPPLY VOLTAGE | 18-36 VDC |
| POWER CONSUMPTION | Approx. 35W |
| RAM | 4GB 3200MT7s LPDDRx onboard memory |
| ENCLOSURE PROTECTION | IP 67 from front given correct mounting and sealing. |
| GLASS TYPE | 3.0 mm Tempered, Anti Reflective |
| INPUT/ OUTPUT | 2 x 10/100/1000 Ethernet RJ45 with TPM 2.0, 1 x DisplayPort (DP++) output, 1x USB 3.1 Gen2 Type C, 2 x USB 3.1 Gen 2 Type A, 1 x RS232 (9-pin DSUB), 1 x RS422 (9-pin DSUB). |
| OPERATING / STORAGE TEMPERATURE | -15/+70° C, -15/+70° C (+5/+158° F, +5/+158° F) |
| BACKLIGHT LIFE | Typ 50.000 Hours |
| DIMMING RANGE | 0-100% |
| OS SUPPORTED | Linux and Windows |
| TOUCH | 10 Point PCAP Multitouch |